



Side Squeeze Shear

The side squeeze (SS) shear with lid is designed to confine and compress heavy steel mill scrap, freight car, and ship scrap. It provides maximum productivity through continuous, efficient production while requiring only limited maintenance due to simplicity of operation.

Processes:

- Steel Mill Scrap
- Pipe and Plate
- No. 1 Heavy Melting Scrap
- No. 2 Heavy Melting Scrap
- Selected sections of freight cars and ship scrap.



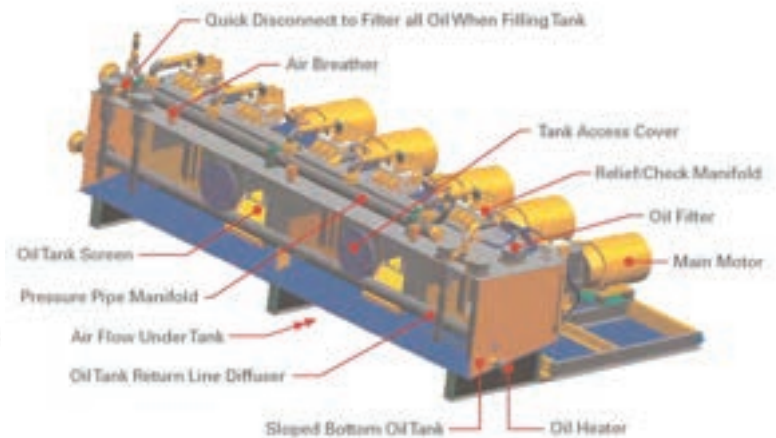
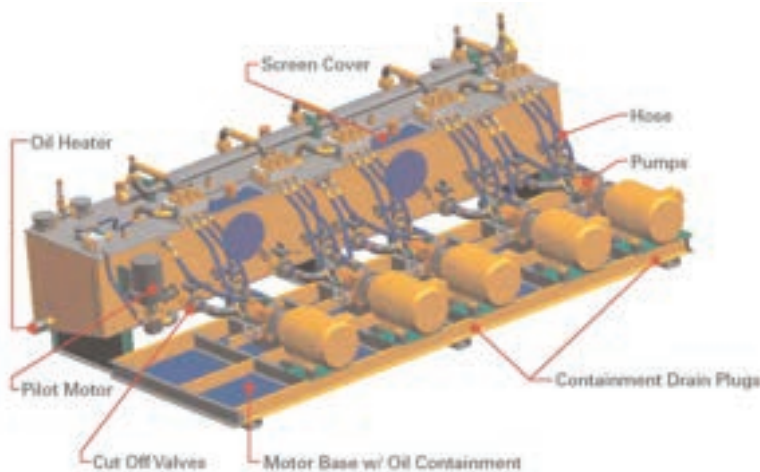
HarrisAmericanCo.com

Side Squeeze Shear



Standard Features

- Flooded suction tanks guarantee pump priming increasing pump life and eliminates dry start-ups.
- Same brand matched pumps are used for optimum flow and pressure.
- Pumps and motors are more accessible with built in drip pan.
- Kidney loop filtration/ cooler pumps are positive displacement type for better filtration and cooling flow.
- Increased use of heavy-duty hoses reduce vibration and noise. Soft shift vents extend pump life by reducing shock and noise in the system.



HARRIS



AMERICAN

BEYOND THE EXPECTED

*All products and features are subject to change. Photos not necessarily representative of new equipment

HarrisAmericanCo.com • 800-710-4994