



DC Series

For set-up boxes and shredded materials

Key Advantages:

- Single Tension Cylinder – the side and top channels are hinged – creating four way tension – 3x greater friction force than competitive designs – creating heavier bales
- Best Auto-tie is the industry featuring pull technology, pulling the opposite side wire to the twisting, cutting and knotting process. Tier unit is on castors so you can easily open the unit to inspect and adjust tier for more accurate tying
- Subfloor System – all units are heavy construction with inner liner system on floor and ram bottoms - provides a much longer lasting design plus much less expensive to renew vs. the competition
- No Shear Required – for applications with 10% or less flat cardboard or slip sheets – much lower cost to operate
- Category III Safety features – all standard



HarrisAmericanCo.com

DC Series

Bale Sizes: 43"x43" x variable and 48"x43"x variable

Width: 43" and 48" wide

Hopper Lengths: 50",63",75"

Main Cylinder: 8" bore trunnion design

System Pressure: 2500 psi

Main Motor: 30, 50, 75 or Twin 30 HP

Feed Type: Conveyor(s), hand, cart dumper, air-fed shreds/trim

Bale Tying: Five-wire auto-tie (Pull Through Design)

Meets all current ANSI 245.5 Safety Standards

PRODUCTION OPTIONS

Additional 4' Bale Tables

Bale Runout Sensor

Side Load Feed Hopper (Flared One Side)

2-Side Load Feed Hopper (Flared Both Sides)

Hopper Extension up to 48" (no window/door)

Hydraulic oil shipped in baler reservoir

Wire Run out Sensors

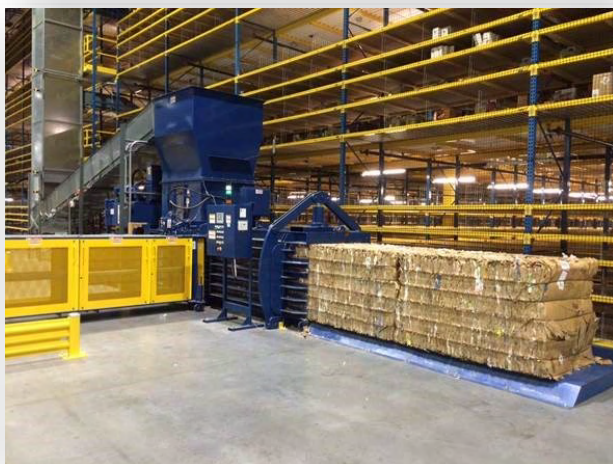
Off-Side Tier Controls

Increase conveyor controls up to 15HP

Bolt-on UHMW tie slot covers

NEMA 4 upgrade

Bulk Wire System



BEYOND THE EXPECTED