



Bisquitter Series

For cans and dust

Key Features:

- 16002 model designed for dust applications
- Single Ram, low maintenance design
- High Density, up to 2900 pound skids
- Easy to handle 25 pound bisquits
- Up to 1,350 Cubic Feet through-put capacity per hour
- Solid State Programmable Controller
- Hi-Speed hydraulic system for more output
- Heavy duty steel fabrication for rugged reliability



HarrisAmericanCo.com

Bisquitter Series

Bale Size: 30" x 48" x 60"

Feed Opening: 36" x 12", 14" x 42.5", 30" x 18"

Main Cylinder: 6", 8", 9", and 10" bore

System Pressure: 3000 psi; 4,000psi

Main Motor: 20, 40, 50, 75, and 150hp

Feed Type: Conveyor, hand, cart dumper

PRODUCTION OPTIONS

Oil Filtration/Moisture System

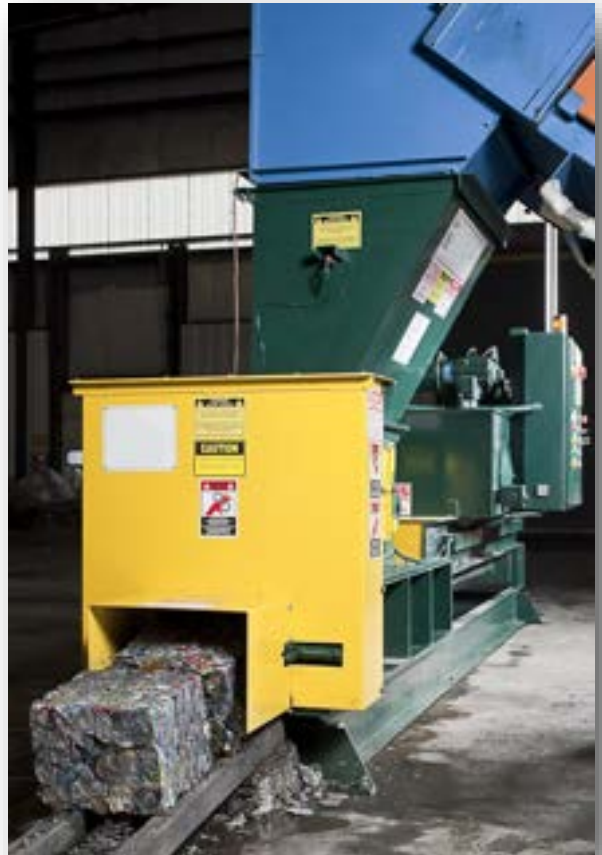
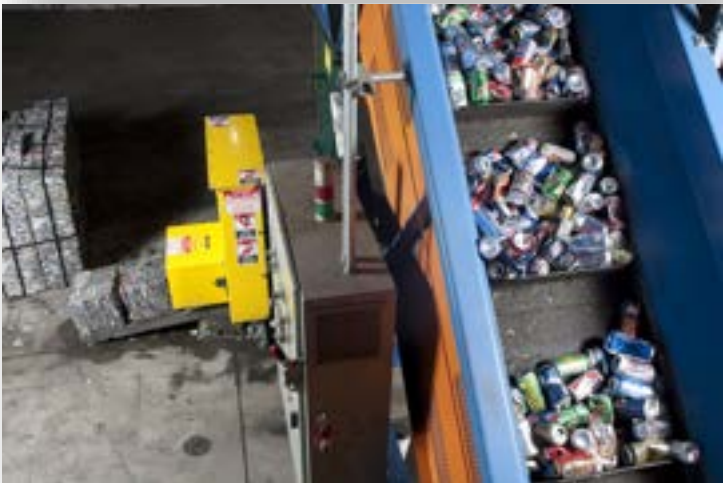
Feed Hopper Extension with

Upper Level Sensor

Hydraulic Oil

Baler Care Program

Special Electric Voltages



BEYOND THE EXPECTED