



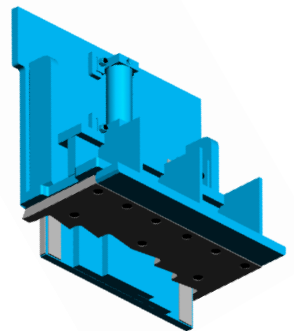
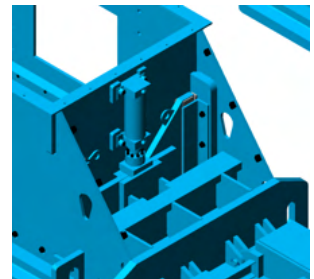
# 8043HSS Series

For higher quantity recycling grades

*260 units installed around the world, and we are still improving!*

## Key Improvements to the new 8043HSS:

- Stamper replaces the shear wiper, with a full 8" of penetration.
- Stamper programmed to work on demand in the case of ram does not travel past shear – increasing production.
- New "V" shaped single piece shear blade, with 9 degree rake from both sides to the center improves performance.
- Hi-Lo floor to minimize material building up under the ram and to prolong floor life.
- Side access door allows easy maintenance at the cylinder end of the baler.
- Power unit – simpler design runs cooler, quieter, and faster.
- Uses laser and tension pressure transducer to manage travel and stamper usage.
- Improved electrical design for even greater simplicity – improved HMI information capability.
- Same footprint as earlier models to allow for easy replacement.



HarrisAmericanCo.com



# 8043HSS Series



Laser



Side Access Panel

Bale Size: 43" x 43" x variable  
Feed Opening: 73" x 43"  
Main Cylinder: 10" or 12" bore trunnion design  
System Pressure: 3000 psi  
Main Motor: Twin 50; Twin 75  
Hi-Lo Floor  
Feed Type: Conveyor(s)  
Bale Tying: Five-wire auto-tie (Pull Through Design)  
Shear: V-Shaped single piece shear w/ 9 degree rake and serrated option

## PRODUCTION OPTIONS

Remote Floor Mounted Power Unit  
Additional 4' Bale Tables  
Fluffer Package  
Off-side tier controls  
Increase conveyor controls up to 15HP  
Bi-Level Bulk Wire System



**BEYOND THE EXPECTED**

HarrisAmericanCo.com • 800-710-4994