



HSL Series

For high quantities of OCC and other large shaped material

Key Advantages:

- Large Feed Opening – 80" x 72"
- Single Tension Cylinder – the side and top channels are hinged – creating four way tension – 3x greater friction force than competitive designs – creating heavier bales
- Best Auto-tie is the industry featuring pull technology, pulling the opposite side wire to the twisting, cutting and knotting process. Tier unit is on castors so you can easily open the unit to inspect and adjust tier for more accurate tying
- Subfloor System – all units are heavy construction with inner liner system on floor and ram bottoms - provides a much longer lasting design plus much less expensive to renew vs. the competition
- Category III Safety features – all standard



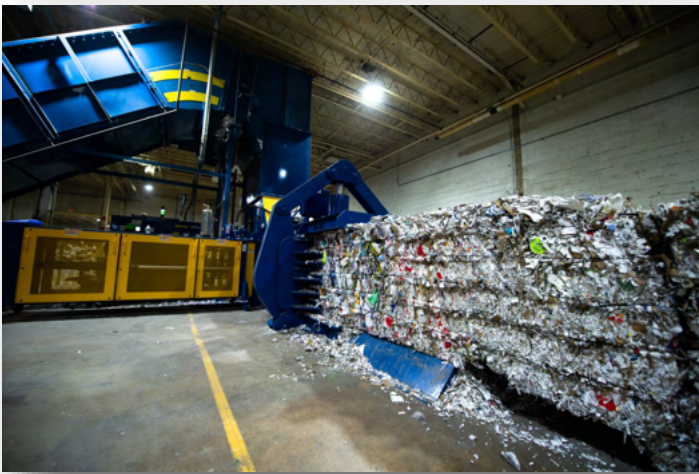
HarrisAmericanCo.com

HSL Series

Bale Size: 43" x 43" x variable
Feed Opening: 80" x 72"
Main Cylinder: 11" bore trunnion design
System Pressure: 3500 psi
Main Motor: Twin 75; Triple 75
Feed Type: Conveyor(s)
Shear: Serrated shear blade, shim-able, reversible, and replaceable
Meets all current ANSI 245.5 Safety Standards

PRODUCTION OPTIONS

Additional 4' Bale Tables
Bale Runout Sensor
Off-side tier controls
Bi-Level Bulk Wire System



BEYOND THE EXPECTED